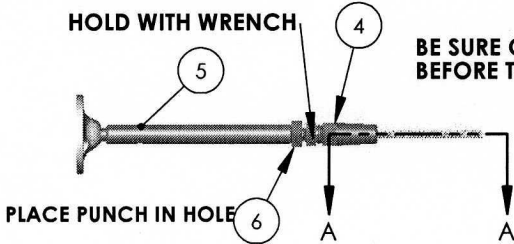
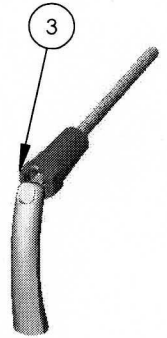
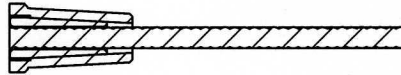
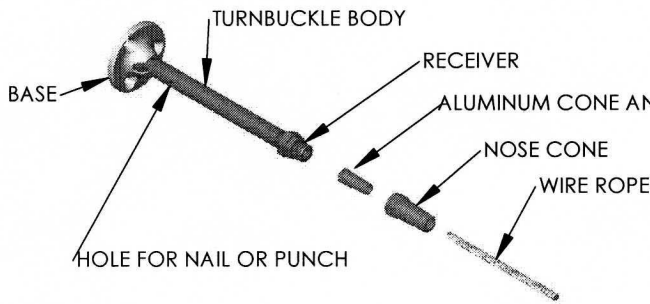


ROTATE SLIGHTLY
AS INSERTING WIRE



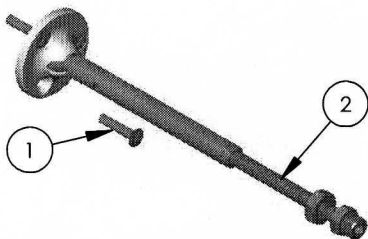
BE SURE CONE IS TIGHTENED FULLY
BEFORE TENSIONING TURNBUCKLE

HOLD FERRULE AS WIRE IS PUSHED IN

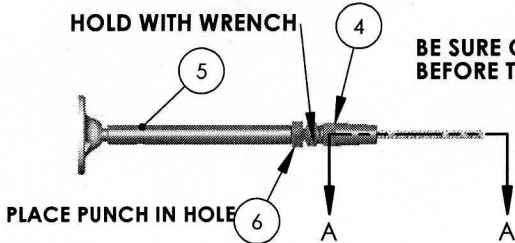
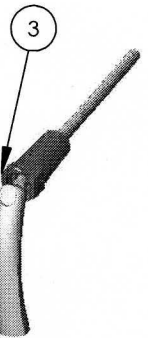
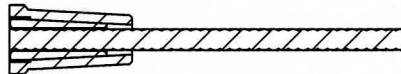


INSTRUCTIONS

1. MOUNT BASE TO A FLAT SURFACE USING (4mm) #8 FASTENER.
2. EXTEND RECEIVER AS NEEDED.
3. REMOVE CONE AND ALUMINUM INSERT, HOLD IN HAND, THEN INSERT WIRE BY ROTATING SLIGHTLY WHILE PUSHING IN TO CONE.
4. WHEN WIRE IS IN CONE, THREAD ON TO RECEIVER. TIGHTEN TILL THREADS ARE NO LONGER VISIBLE.
5. TO TENSION: HOLD NUT OF RECEIVER WITH A WRENCH. PLACE A NAIL OR PUNCH IN HOLE, THEN ROTATE TURNBUCKLE BODY AS NEEDED..
6. TIGHTEN NUT TO LOCK IN TENSION.

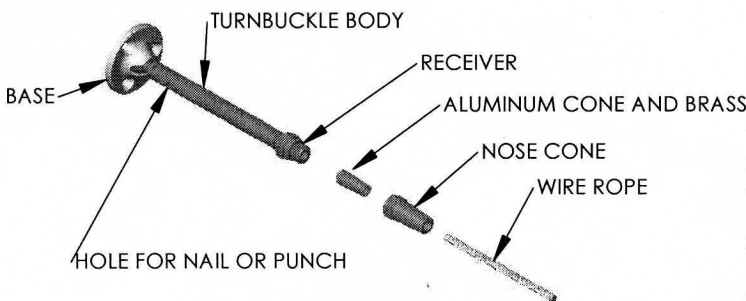


ROTATE SLIGHTLY
AS INSERTING WIRE



BE SURE CONE IS TIGHTENED FULLY
BEFORE TENSIONING TURNBUCKLE

HOLD FERRULE AS WIRE IS PUSHED IN



INSTRUCTIONS

1. MOUNT BASE TO A FLAT SURFACE USING (4mm) #8 FASTENER.
2. EXTEND RECEIVER AS NEEDED.
3. REMOVE CONE AND ALUMINUM INSERT, HOLD IN HAND, THEN INSERT WIRE BY ROTATING SLIGHTLY WHILE PUSHING IN TO CONE.
4. WHEN WIRE IS IN CONE, THREAD ON TO RECEIVER. TIGHTEN TILL THREADS ARE NO LONGER VISIBLE.
5. TO TENSION: HOLD NUT OF RECEIVER WITH A WRENCH. PLACE A NAIL OR PUNCH IN HOLE, THEN ROTATE TURNBUCKLE BODY AS NEEDED..
6. TIGHTEN NUT TO LOCK IN TENSION.